



CW
THE CAPITAL WAY
B A D R C I T Y

**YOUR BRAND,
A LANDMARK..**

مشروعك، علامة فارقة..

TABLE OF CONTENTS

- 1- PHILOSOPHY
- 2- INVESTMENT OPPORTUNITY
- 3- OUR STORY
- 4- MESSAGE FROM THE CEO
- 5- ARCHITECTURE & DESIGN
- 6- CONCEPT OF THE CAPITAL WAY
- 7- ABOUT THE PROJECT
- 8- LOCATION
- 9- MASTER PLAN
- 10- FEATURES & FACILITIES
- 11- SPACES & COMPONENTS
- 12- PARTNERS IN SUCCESS
- 13- CONTACT US



PHILOSOPHY

The background of the image is a deep, dark teal or black, speckled with numerous small, white stars, suggesting a night sky. In the center, a large, circular vignette frames a landscape. Inside this circle, a bright, glowing sun or moon is positioned in the upper half, casting a warm, golden light. Below it, a thick layer of white and yellow clouds stretches across the horizon. In the foreground, a dark, paved road with white dashed lines leads from the bottom center towards the horizon, flanked by dark, silhouetted hills or mountains. The overall mood is dreamlike and contemplative.

The Capital Way is more than a destination, it's a flowing journey of architecture, lifestyle, and timeless experiences.

At The Capital Way, architecture isn't just design, it's a philosophy. Every curve, line, and detail has been envisioned to create an experience where people feel inspired, not confined.

● **ICONIC U-SHAPED DESIGN:**

The fluid architectural curves offer depth and openness, creating a sense of flow that eliminates any feeling of congestion.

● **THE HEART OF THE PROJECT:**

At the very core, a central “sphere” has been designed to act as a focal point, an anchor for premium dining experiences and a place where people naturally gather.

● **ELEVATED ROOFTOP EXPERIENCE:**

Cafes, restaurants, and shaded seating areas transform the rooftop into a vibrant social destination, with greenery softening the sun and creating an inviting atmosphere.

● **FLEXIBLE RETAIL LAYOUT:**

Thoughtfully distributed shops across multiple levels, with flexibility for interconnection, ensure that each unit maximizes visibility and accessibility.

● PREMIUM MATERIALITY:

Every finish has been selected with luxury in mind, creating not just spaces but a lasting sensory experience.

● LANDMARK FEATURE:

A striking sculpture elevates the identity of The Capital Way, transforming it into a cultural and social landmark where visitors are inspired to capture the moment.

● SEAMLESS ORIENTATION:

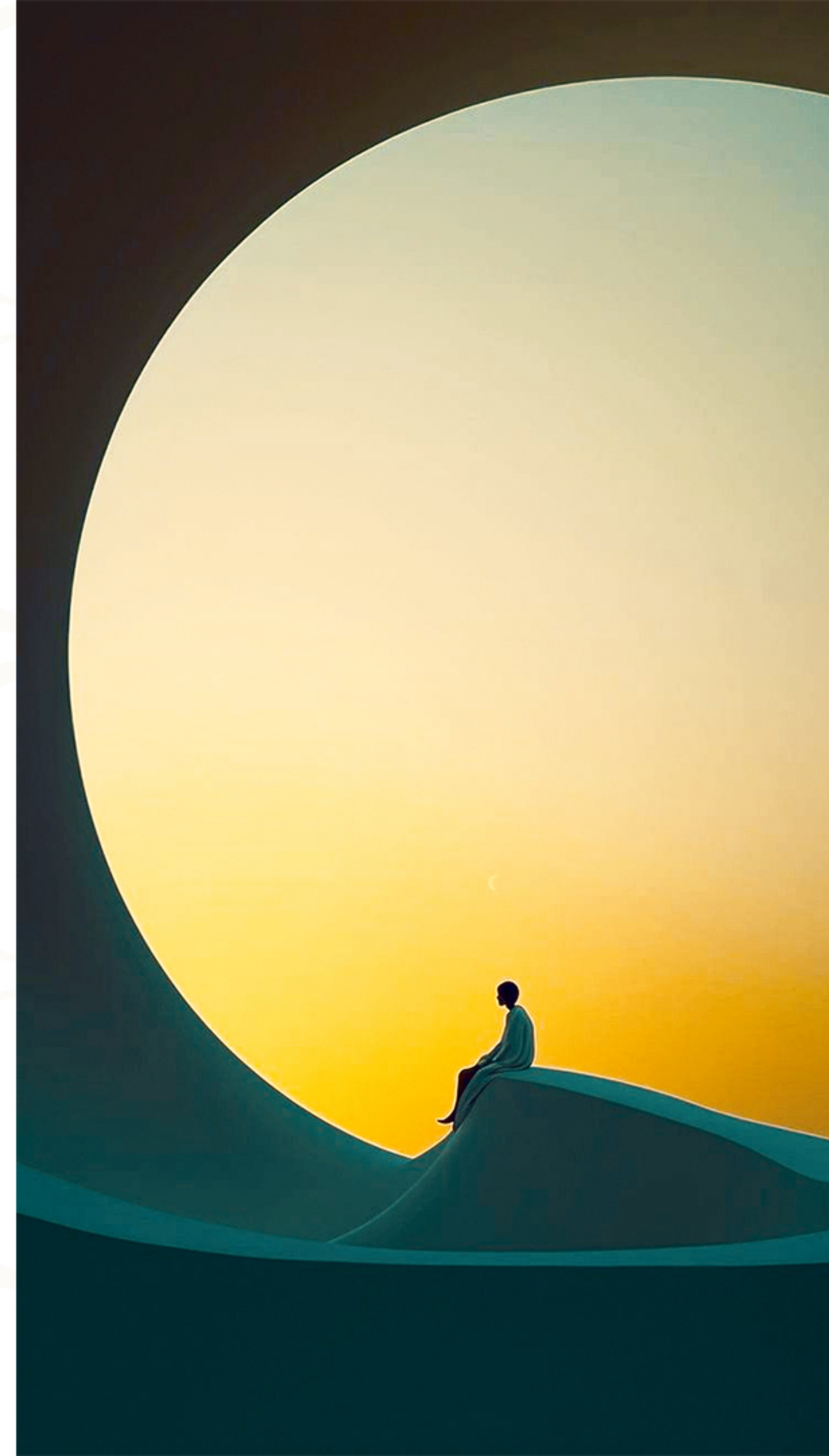
The northern facade welcomes natural sunlight, softened by shaded greenery, while the rear side integrates restaurants and terraces that immerse visitors in a lively outdoor ambiance.

● DEDICATED MEDICAL HUB:

The uppermost floor is exclusively designed as a medical hub, ensuring a well-balanced mix of lifestyle, commerce, and healthcare.

INVESTMENT OPPORTUNITY

Whether you're launching a brand, clinic, or office,
The Capital Way's flexible spaces and prime visibility make it a strategic investment with high return potential.



OUR STORY





Omidar Developments brings you The Capital Way Mall, a future-forward project that blends strategic location, premium quality, and modern functionality.

MESSAGE FROM THE CEO



The Capital Way isn't just another mall, it's a gateway to tomorrow's business.
With every square meter, we deliver opportunity, access, and vision.

CONCEPT OF THE CAPITAL WAY



More than a mall, The Capital Way is a business ecosystem built to host retail brands, restaurants, cafes, medical clinics, and administrative hubs.

It's designed for ease, exposure, and long-term value.

ABOUT THE PROJECT

Land Area: 4,000 m²

Project Type: Commercial – Administrative – Medical

Plaza Size: 540 m²

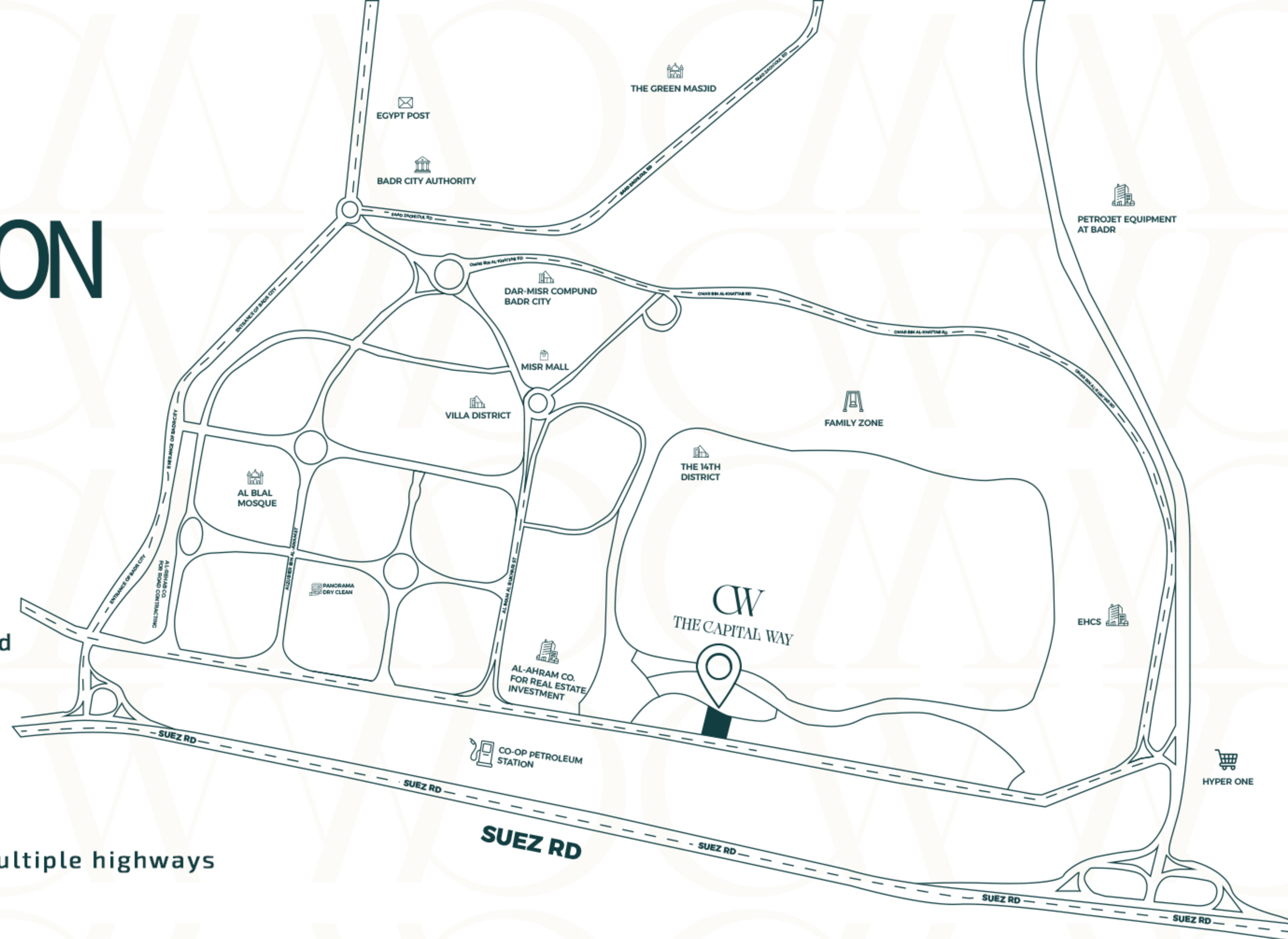
Prime double-face frontage on Suez Road

Facing Capital Towers, beside Hyper One & Global Medical City



LOCATION

- Directly on the Suez Road
- Opposite Capital Towers
- Beside Hyper One
- Near Global Medical City
- Excellent access from multiple highways





MASTER PLAN

- SMART ENTRANCE
- OUTDOOR PLAZA
- BASEMENT PARKING
- ESCALATORS & ELEVATORS
- CENTRAL AIR CONDITIONING
- 24/7 SECURITY & CCTV
- ELECTRONIC GARAGE GATES



FEATURES & FACILITIES

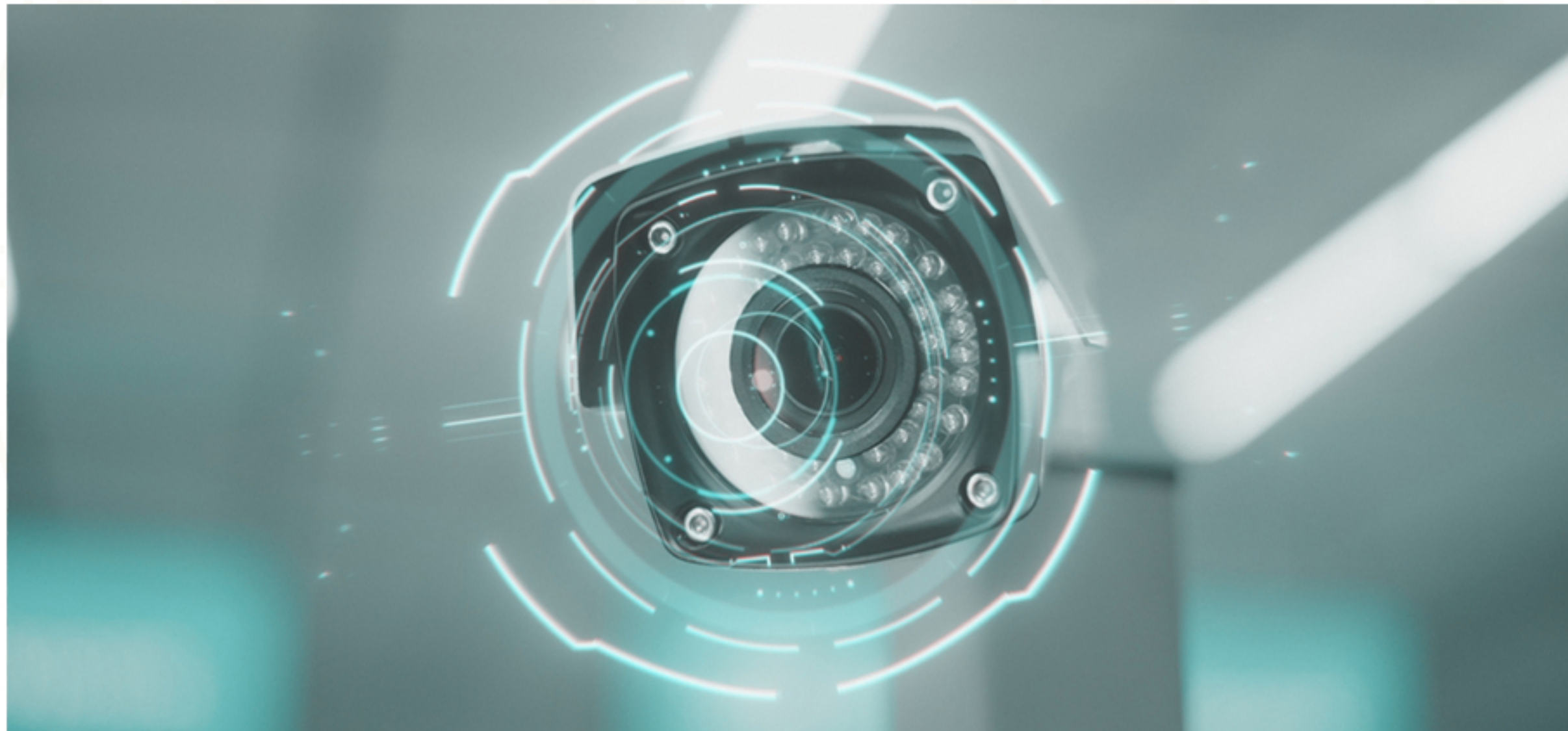


ESCALATORS & ELEVATORS

ESCALATORS &
ELEVATORS



CCTV & SMART SECURITY



CCTV &
SMART SECURITY



**BABY CARE
AREA**

**BABY CARE
AREA**



CENTRAL AC



CENTRAL AC



PARKING (UNDERGROUND)

PARKING
(UNDERGROUND)



PLAZA & OPEN SPACES



PLAZA &
OPEN SPACES



MODERN FINISHES

MODERN
FINISHES





THE CAPITAL WAY

SINAGE

SINAGE SINAGE

SINAGE SINAGE

SINAGE

SINAGE

SINAGE

SINAGE

SINAGE

SINAGE

SINAGE

SINAGE

SINA

SINAGE

SINAGE

SINAGE

SINAGE

SINAGE

SINAGE

SINAGE

SINAGE

SINAGE

SINAGE

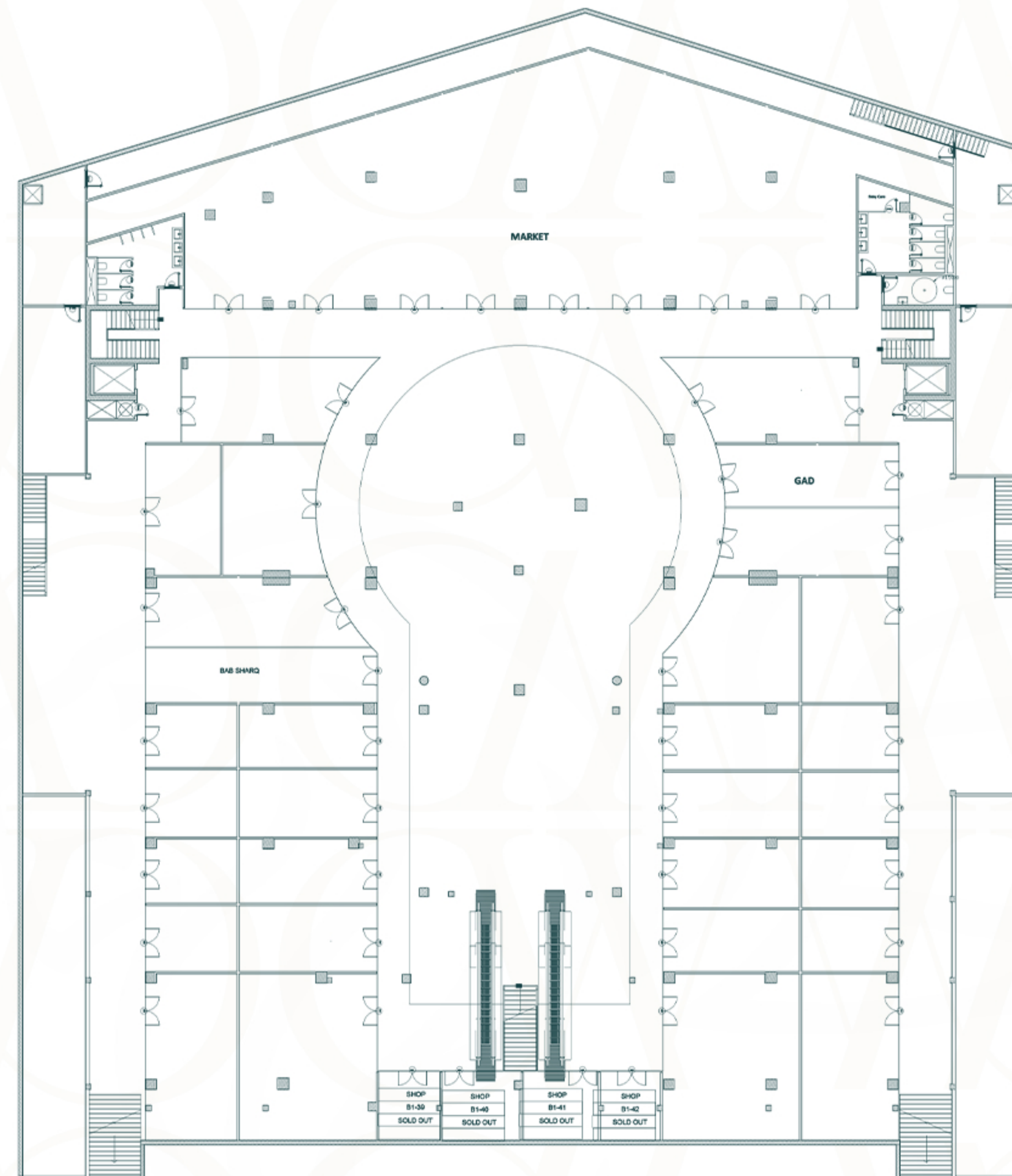
MEDICAL HUB

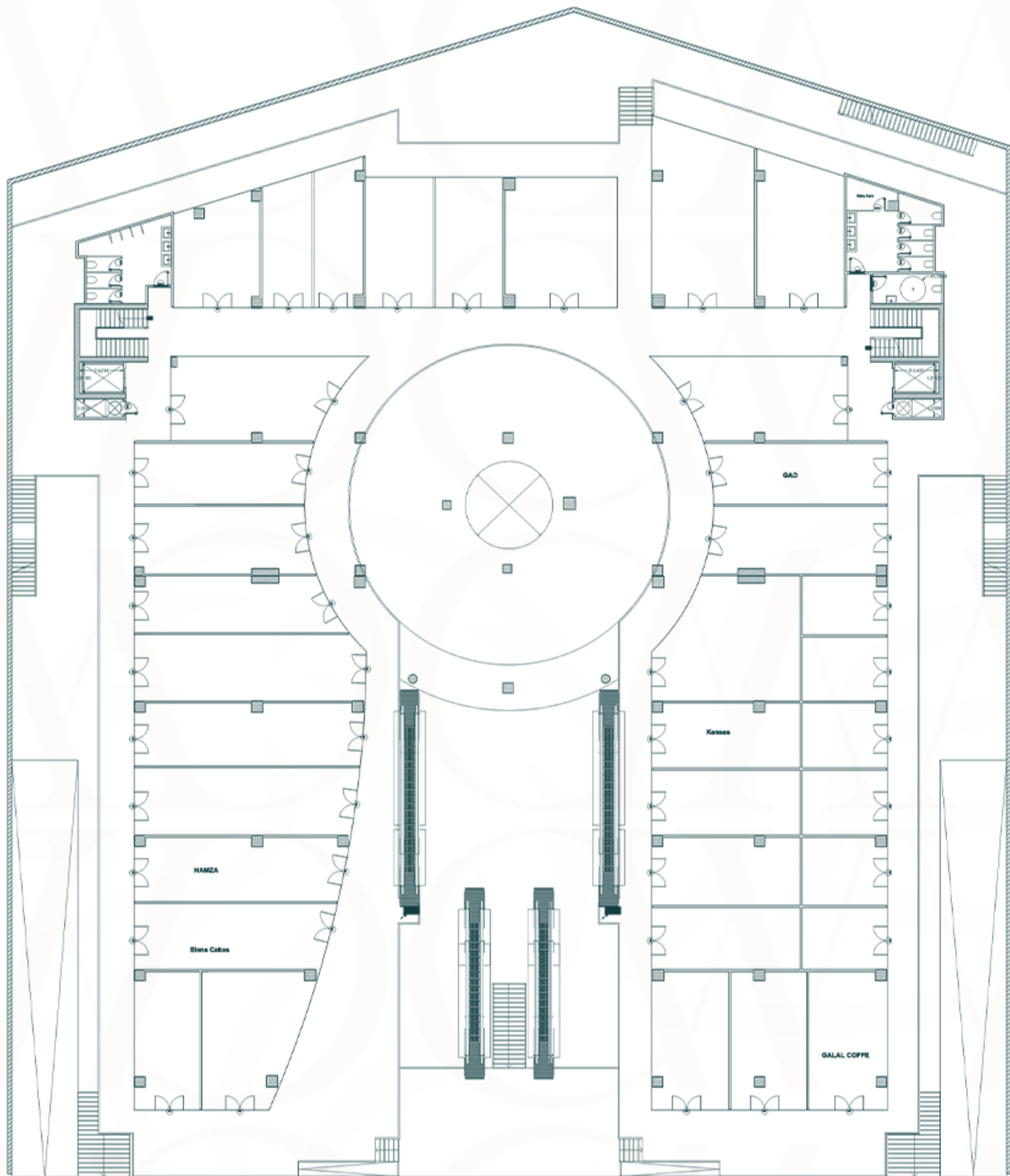
SPACES & COMPONENTS



G1

COMMERCIAL (F&B)





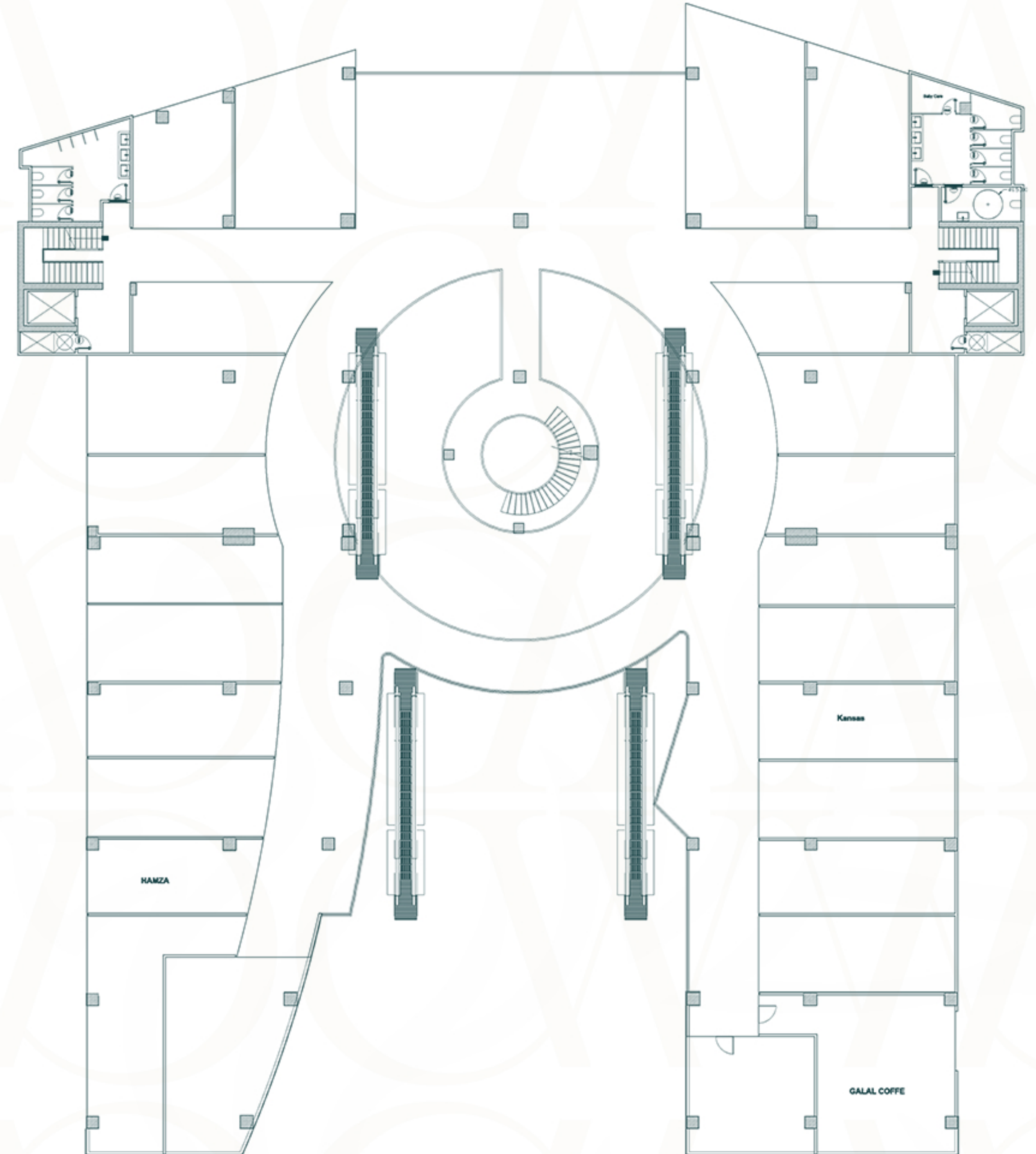
G2

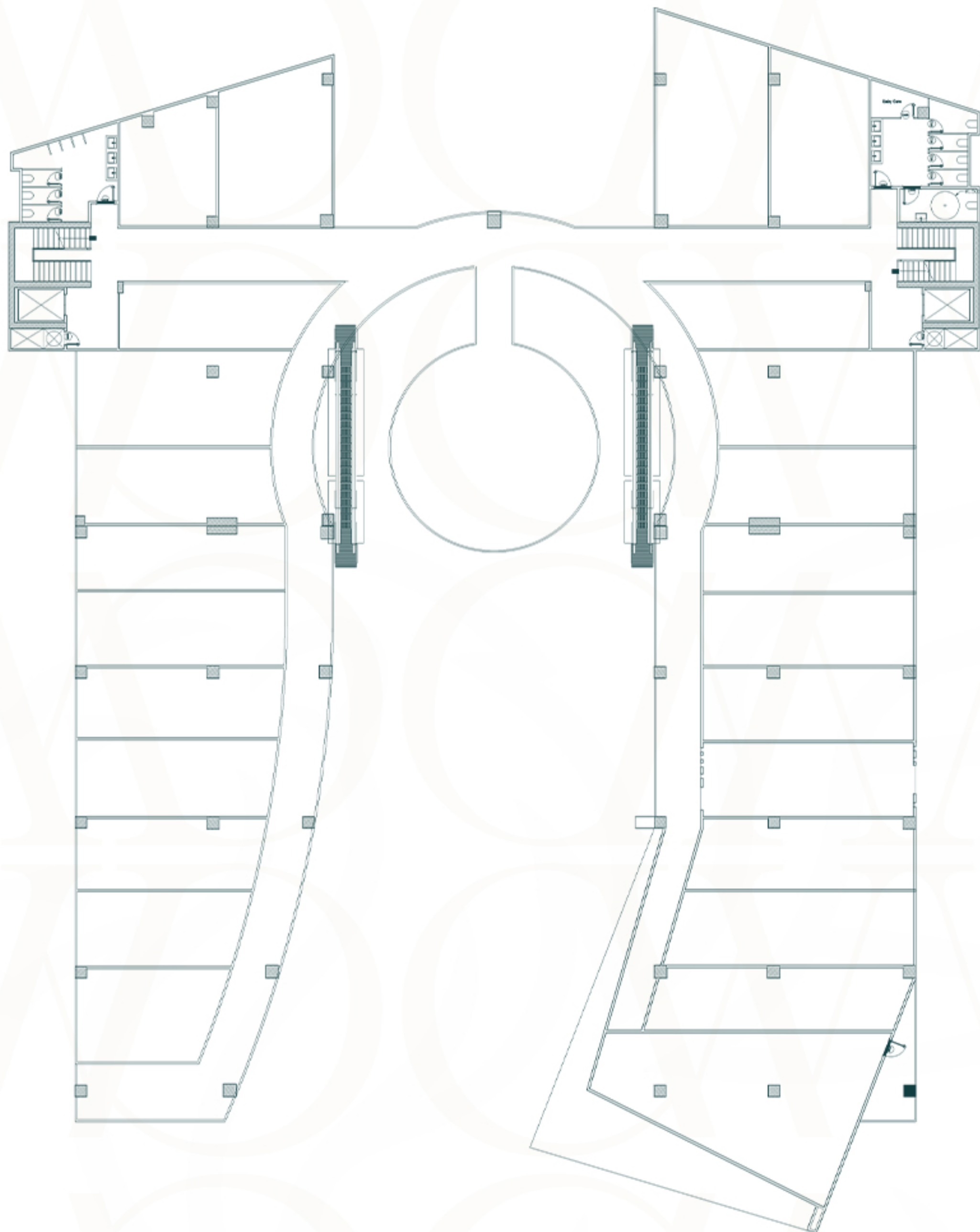
COMMERCIAL (F&B)



FIRST FLOOR

COMMERCIAL (RETAIL)





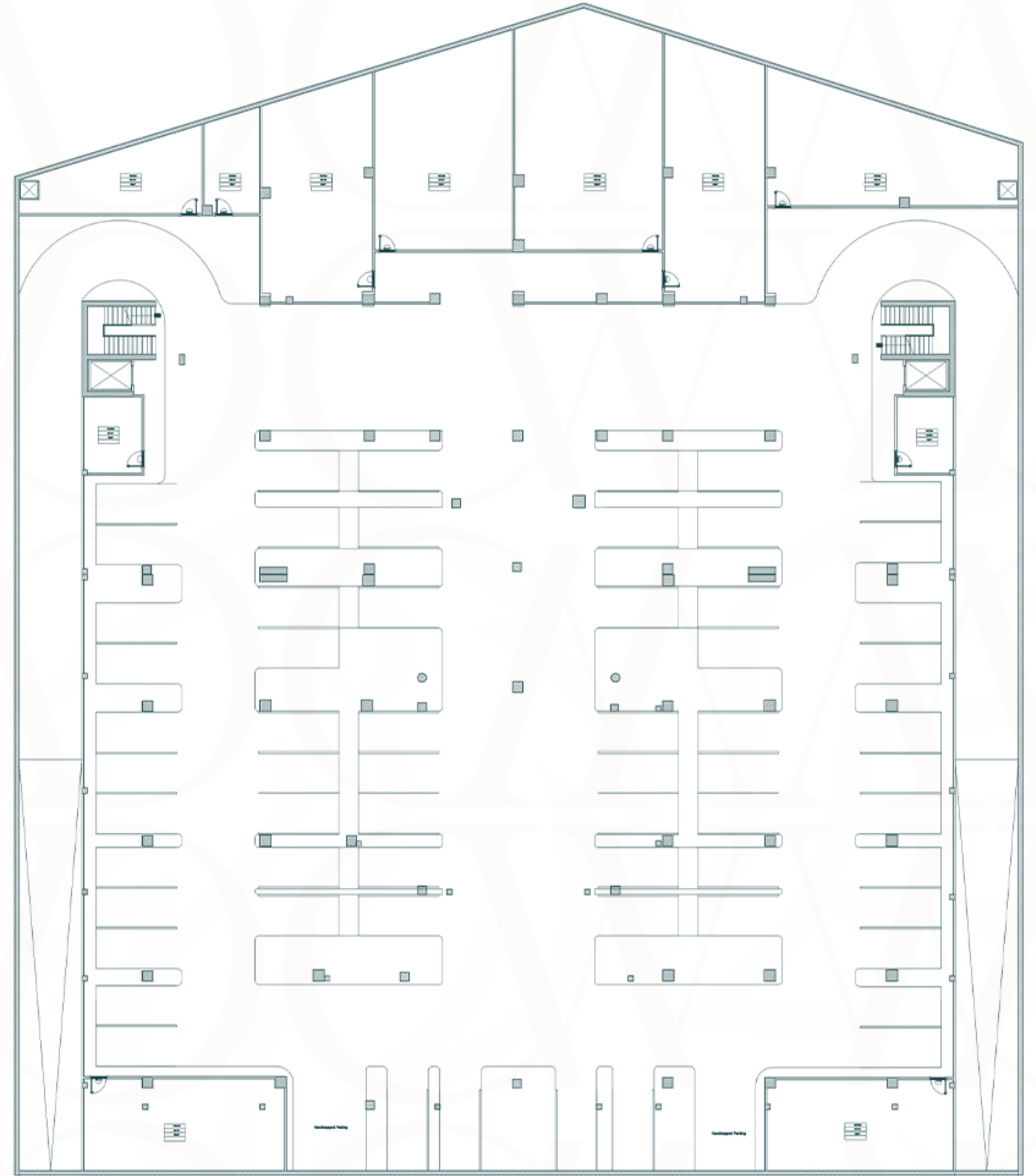
SECOND FLOOR

MEDICAL & ADMIN



BASEMENT & GARAGE

PARKING + SERVICES



STRATEGIC PARTNERS

ENGINEERING
CONSULTANT



PROJECT EXECUTION
DEPARTMENT



ACE CONSULTING ENGINEERS
MOHARRAM.BAKHOUM

MANAGEMENT
& OPERATION

FRANVOY

PARTNERS IN SUCCESS





DEVELOPED BY :



17598

WWW.OMIDAR-EG.COM